



Installation instructions
Valve Control 2
VW Golf 7 R

Dear customers,

for our installation pictures in these installation instructions were no Golf 7R available. So if the represented situation should be different than shown here, we would be pleased if you could send us detailed pictures and information to complete this installation instructions.

Start situation:



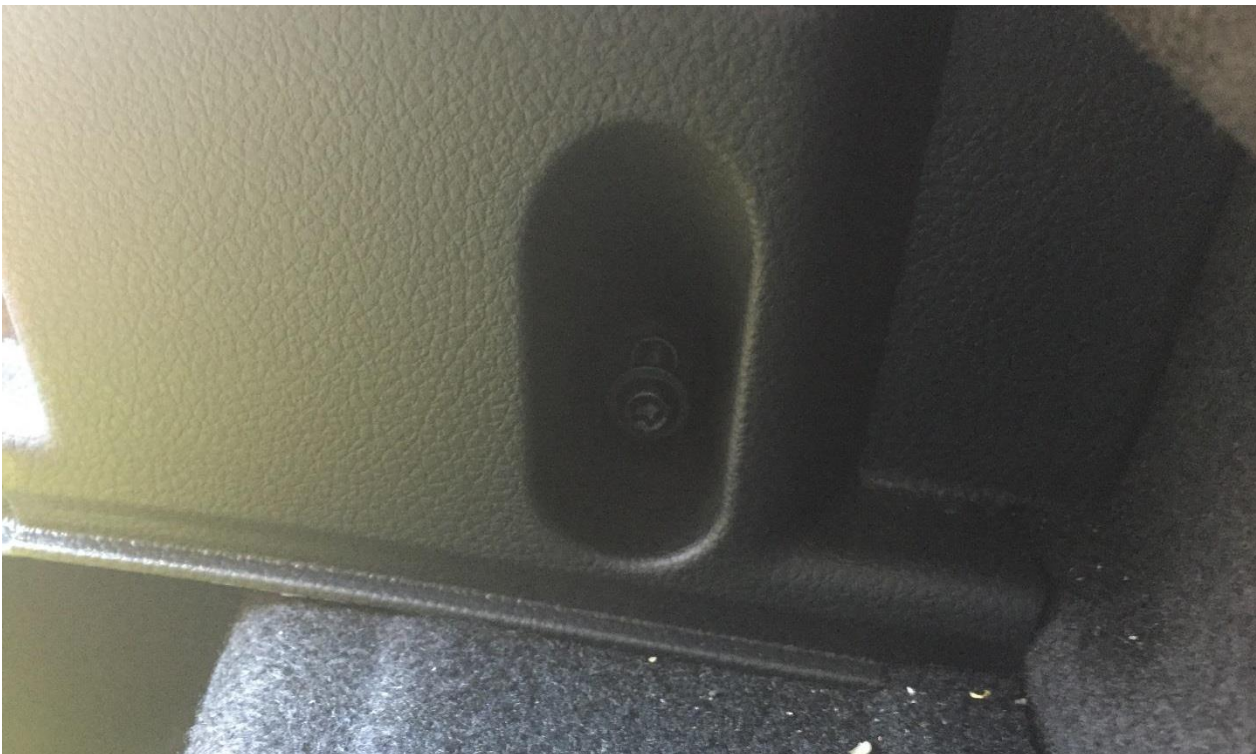
Remove trunk floor and rear deck:



Remove bumper trim, it is fixed at four positions with clips (if you have a built-in trailer hitch please contact us!):



Unscrew the screws on the left and right for the side panel (Torx 25):



The following steps are to be performed on the driver and passenger side!

The side panel is additionally fixed by 4 clips and another screw in the region of the rear bank. The screw is not available without high disassembly costs, so we do not remove the covering completely but pull it a little bit to the side. following we are showing the position of the 4 clips:



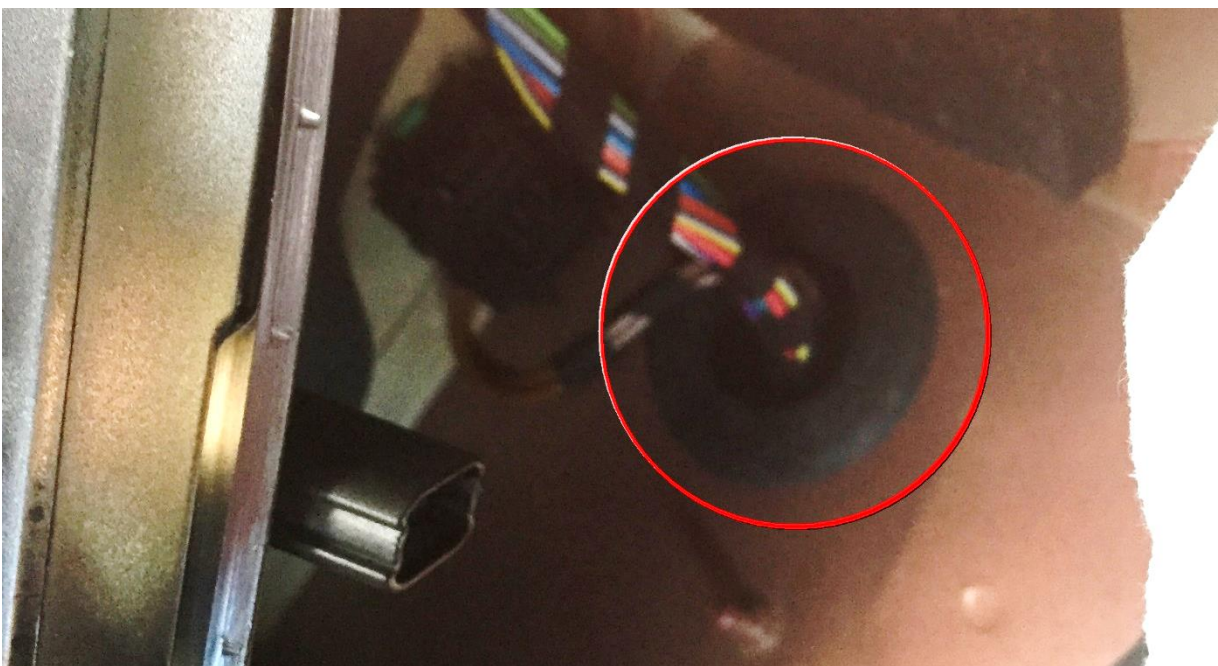
The carpet of the side panel is fixed by three plastic clips:



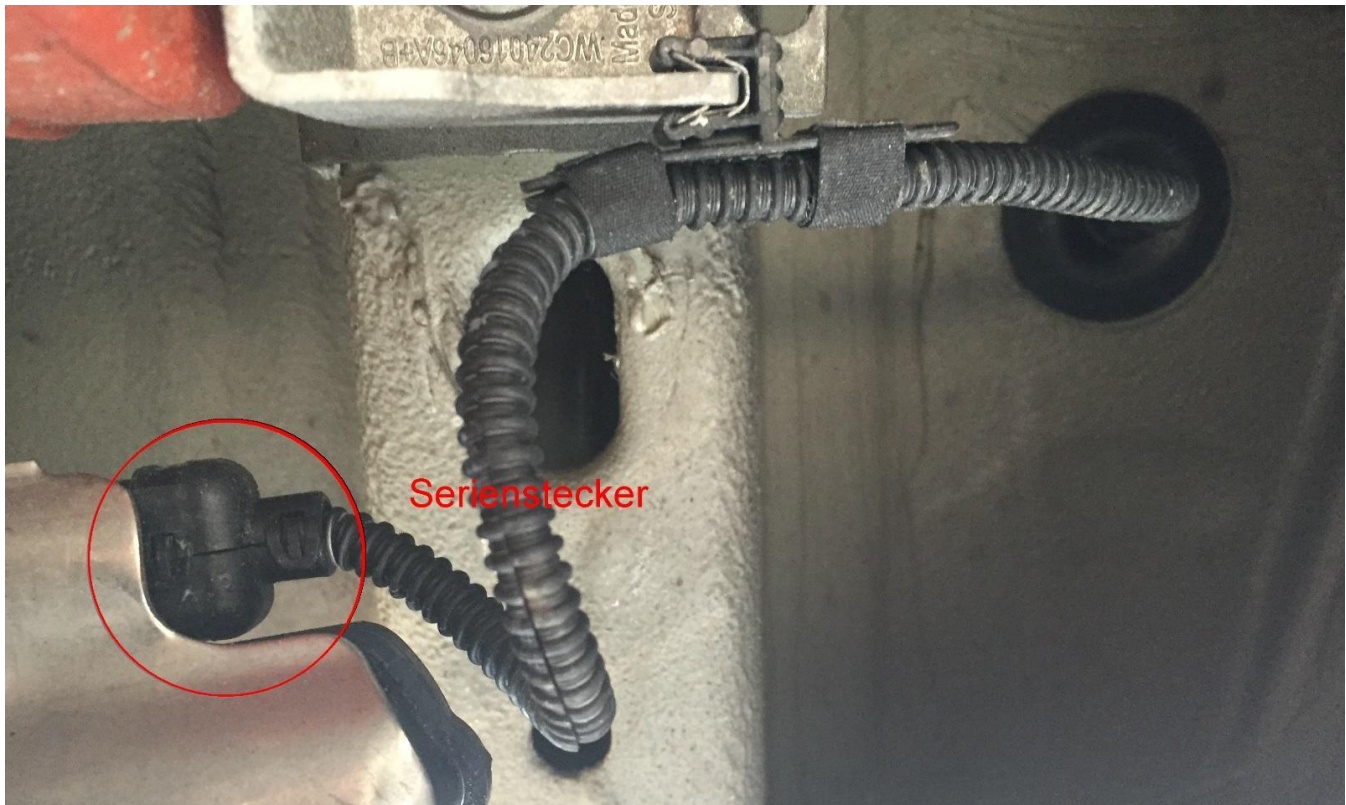
Behind the carpet, a controller maybe located. If so, he can be easily removed, he is only attached to one pin of the car body:



Now the rubber grommet is visible, the plug must be inserted through the rubber either or if this is not possible, be guided past the hole on the side:

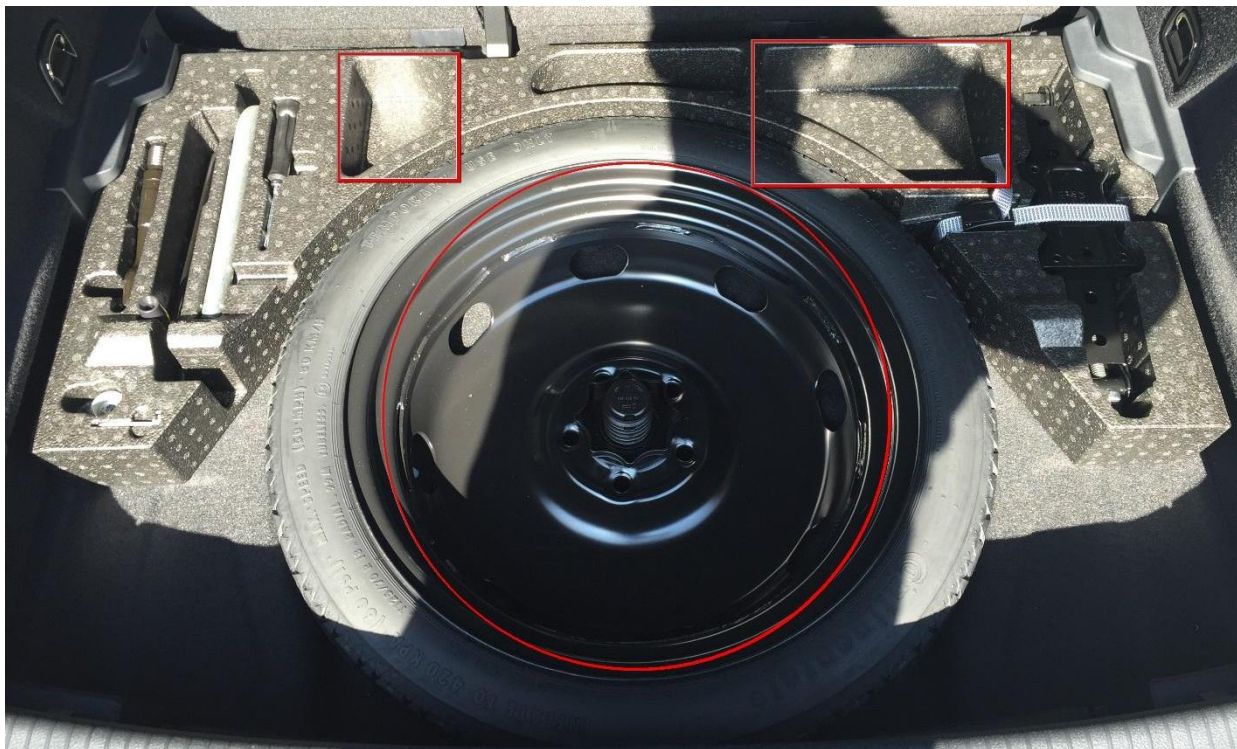


On the end the original connector has to be deducted from the servo motor, plugged into the appropriate mating plug and the plug of the flap control are plugged into the servomotor:



For cars with a servomotor left + right both Y-cables can each be mounted left or right, this has no influence the function of the controller.

The cable of the control flaps are designed so that the flap control can be placed either in the foam above the spare wheel or within the spare:





Owner: Christian Müller

Vorstadt 15

94577 Winzer

Germany

Telephone: +49 (0) 9901 200981

Fax: +49 (0) 9901 200983

info@special-exhaust.de

www.special-exhaust.de